



# WOOD POLYMER COMPOSITE MATERIAL



**Shubh Composites**  
**Shubh Wood Experience Centre:** 418, ankur marble gali, Gota , ahmedabad ,Gujarat - 382481  
**Factory Address:** Survey No. 570, Opp. Sona Ceramic, Old Ghuntu Road, Morbi, Gujarat. India.  
E-mail: [info@shubhwood.com](mailto:info@shubhwood.com), [shubhwood@gmail.com](mailto:shubhwood@gmail.com), Web: [www.shubhwood.com](http://www.shubhwood.com)  
Mob.: 075678 075567, Tel: +91 2822 240617. Fax: +91 2822 240618



[www.ideationdesign.in](http://www.ideationdesign.in)

We have only  
 *one earth,*  
Please save and protect the  
*forest resources.*



"Shubhwood is the only India company  
whose WPC products are certified as  
GREEN PRODUCT by IGBC - CII"





Shubhwood Premium Composites  
are the modern alternative  
to tropical hardwood

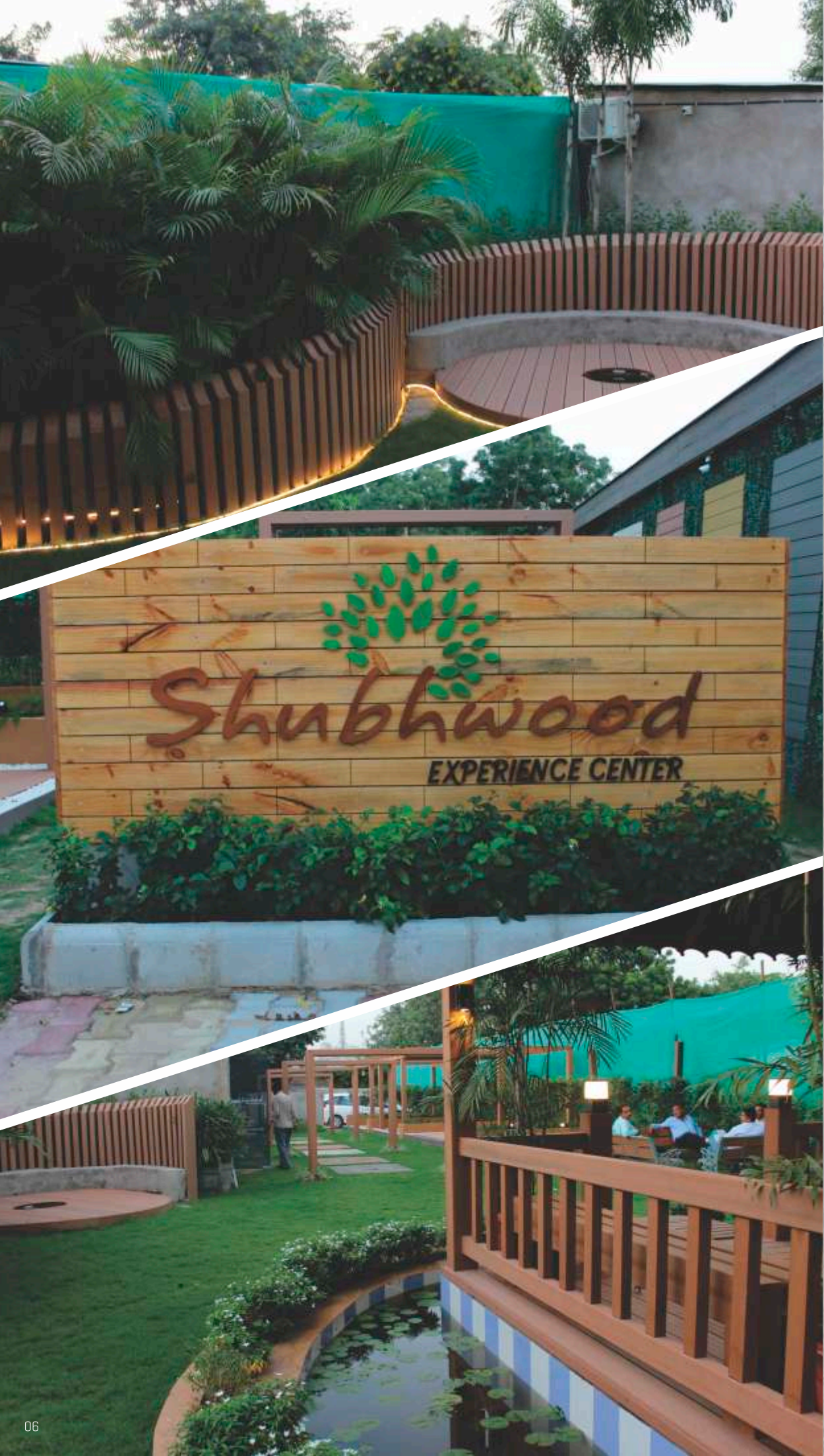


Shubh Wood is young dynamic company in the emerging field of manufacturing wood composite panels. We have developed a sound and spacious infrastructure at Morbi, Gujarat (India), supported by which we are able to carry out the production process of offered wood plastic composite panels

Leveraging on the support of our dexterous workforce, we are able to manufacture and supply high class Wood Plastic Composite Panels. Customers sprawled across the nations widely appreciate the offered wood plastic composite panels as these are made using high grade raw material. Moreover, we make use of modern machinery in the manufacturing process of these wood plastic composite panels so as to ensure their fine finish.

We believe in our people, their strength and we believe in giving sky for their growth. With an absolute dedication of developing cluster based production systems for 'Wood plastic composites', we are continuously working on several application development for wood and furniture industry from WPC. We have successfully developed WPC Decking, WPC Wall Cladding, WPC pergola, WPC gazebo, WPC railing, WPC benches, WPC louvers and many other products.





# CONTENTS

<u>Deck Flooring</u> 14	<u>Hybrid Deck Flooring</u> 18	<u>Deck Tiles</u> 19
<u>Wall Cladding</u> 24	<u>Hybrid Wall Cladding</u> 26	<u>Pergola &amp; Gazebo</u> 27
<u>Railling</u> 34	<u>Hybrid Louver</u> 36	<u>Benches</u> 37
<u>Hybrid Plank</u> 38	<u>Exterior Gate</u> 39	<u>Other Application</u> 40
<u>Color, Surfaces &amp; Accessories</u> 41	<u>Test Parameter &amp; Certificate</u> 42	<u>Branding &amp; Exhibition</u> 43



# WPC

## WPC a material of the future

A precious natural entity gifted by the Mother Earth. We work on preserve virgin forests. We believe in 'not to cut' virgin trees. Thus, we evolved an important subject called 'wood polymer composite' - 'WPC in India'.

We, Paresh Bhimani introduced SHUBHWOOD as a brand for WPC products. Overwhelming response led us to turn it into a larger brand as 'WPC CENTRE'. At 'WPC CENTRE' we design, manufacture and deliver products 'Made with WPC'. We have created this place as a dedicated junction that works and promotes WPC products.

we wish the nation and the world for the Greenest time. Let's be responsible by not cutting trees.

USE WPC. Save trees. Save earth.

### HOW SHUBHWOOD's WOOD POLYMER COMPOSITE PRODUCTS ARE BENEFICIAL TO THE ENVIRONMENT:

- Made from 100% post consumer plastic and wood
- Does not leach any chemicals into surrounds
- Reduces waste matter going into landfill
- Requires minimal water for production and water is reused in manufacturing
- Its use helps to raise awareness about the benefits of recycled products
- Does not require precious natural resources for production
- Less energy is required to recycle plastic than is needed to make new plastic
- Can be used to substitute other products that do require natural resources
- New employment opportunities in a growth industry – better for the community
- Requires low energy for production
- Manufacturing produces almost zero emissions



# WPC

## BENEFITS



Low Maintenance



Eco-Friendly



Durable



Resistance To Insects



Easy Installation



Non Slip Surface



Non Flammable



Water Resistance



Temperatures Resistance



Resistance to Fungi And Bacteria



High UV Resistance

### Advantages that stack up

Shubhwood is not just an innovative product: it is highly sought after for its modern look. The colour in the boards is permanent, and, for large-scale bespoke constructions, special colours can be produced to order. The technology deployed guarantees an impeccable finish.

On a technical level, professional fitters appreciate the precise specification and layout planning that it allows, the low wastage rates, and the speed of installation. Shubhwood wood polymer composite eliminates the need for rendering, and needs no maintenance. Finally, it is the perfect solution for building ventilated facades.

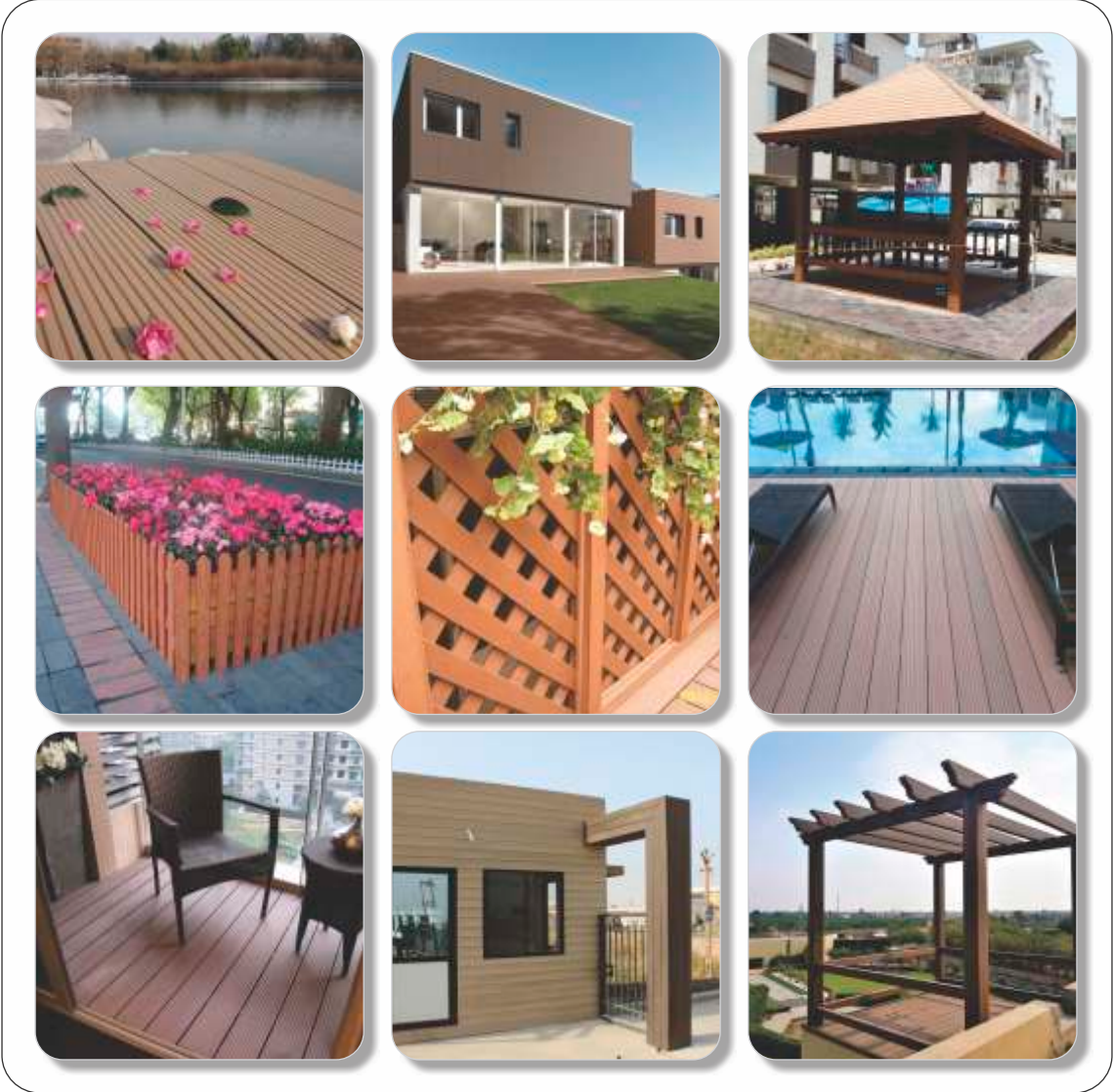


# WPC

## APPLICATION

Current applications for WPCs are largely in finished products such as decking, cladding and window frames. In the USA, the market for WPC products has grown at a rate of 100% per year for the last 5 years and this is increasing as new applications are found for the materials. A particular growth area is in structural engineering applications that use the physical properties of WPC to the limits. WPCs can be used for products traditionally manufactured from timber and PVC-U and typical applications are:

- Outdoor DeckingSwimming pool decking
  - Garden & Terrace Tiles
  - Sound proof Cladding
  - Siding &Railing
  - Pavilion and pergola
  - Dustbin& Flower Pot
  - Door Frame and Window Frame
  - Skirting boards
  - Exterior Gates
- Pool Deck Tiles
  - Interior & Exterior Wall Cladding
  - Ceiling Panel
  - Fencing and fence posts
  - Bench and outdoor desk
  - Louvers
  - Walk Bridge
  - Office partition
  - Gazebo

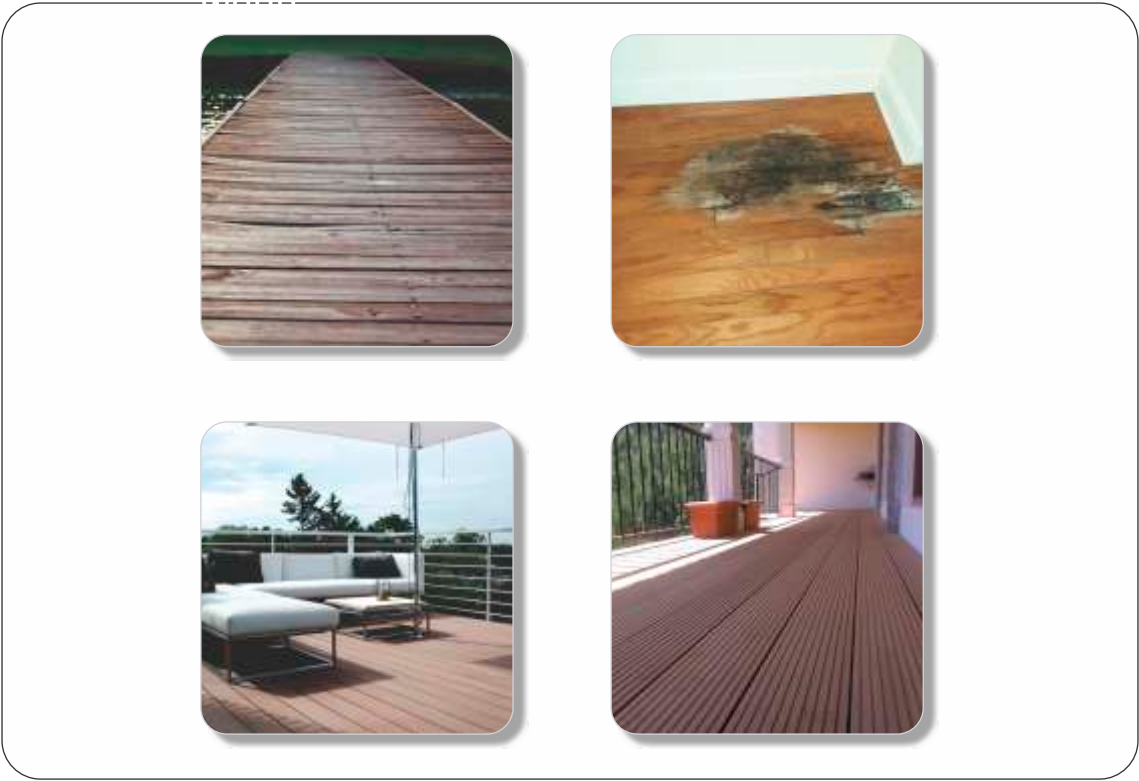


# WPC

## CONTRAST TO WOOD



Comparing to nature wood and Shubhwood composite products. pls see below images, obviously that, after few years of time -tested about water (rain), climate (hot-cold), UV - arrounding (sunshine ) and moth -eaten ,you can see the real picture show. the WPC still keep their excellent performance. But the nature wood have became crack , fade , moth -eaten , aging and rotten.



## CONTRAST TO WOOD

CHARACTERISTIC		WPC	WOOD
Using Property	Resistance To Moisture	Is waterproof	Is not waterproof
	Resistance to rot	Antisepsis	Is easy to rot, need special treating
	Resistance to split	Never split generally	Is certain to split the effect of weathering
	Resistance to distortion	Is infrequent to distort	Is easy to distort especially outdoor
Application to Outdoor	—	Is very adaptive	A few genus of treated - wood is adaptive
Maintenance	Painting	Need not paint	Need paint periodically to maintain
	Coloring	Have many types of color itself, needn't paint	Need paint sometimes
Lifespan	—	No maintance , longer life-time	Exist with maintance
Form	—	Can be extruded to manufacture many types of forms, and can be made order	From is simplex
Environment effects	—	Can by recycled with 100%	Consume woods
Summing Up	—	The ratio of capability to price is large	The ratio of capability to price is lesser





H Y B R I D

## Shubhwood New Generation of WPC

### Co-Extrusion Composite Is the Smart Way to Get a Great-Looking, Long-Lasting Deck

The Co-Extruded Surface and Core Are Extruded Together Under a Very High Temperature Mold Simultaneously, So There Is No Adhesives or Chemicals That Are Harmful To the Environment



#### 1. Co-Extruded Surface

Shubhwood Extruded Surface Is Made Of Multi Engineer Plastic with an Outer Shell Of Plastic With Protection For Beauty, Stain, Fade And Mold Resistance

#### 2. Composite Core

The Core Is The Traditional Wood Plastic Composite Materials.

#### What Is Co-Extrusion WPC

Co-Extrusion Is The Second Generation Wpc Product, Co-Extrusion Is Also Called "Capped" Or "Cover" Deck. It Is Important Distinction To Note Because That Earlier Generations Of WPC Were Uncapped, The Big Difference Is That Co-Extrusion Wpc Has A "Cover" That Provides Added Protection Against The Elements And Everyday Living. As A Result, They Were Far More Vulnerable To Staining And Fading. Of Course, When We Say Cap Or "Cover" We Don'T Mean Something That Is Added After The Composite Decking Is Made, The Cap Is Bonded To The Core During The Manufacturing Process.

## Compared With Traditional Wood Plastic Composites, The Co-Extrusion WPC Has Many Advantage

- Better Resist To Uv, Better Color Stability;
- Better Resist To Moisture And Termites;
- Extreme Durability And Reliable: Less Water-Absorption, Less Rotten, Wear Proof;
- More Natural Surface: Wooden Texture, Looks Like Real Wood.
- More Durable, More Attractive, More Fade And Scratch Resistant, More Beautiful And More Reliable.
- Low Maintenance At An Excellent Price.





# WPC

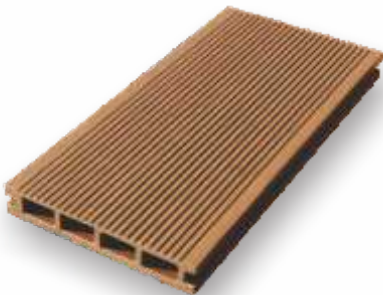
## DECK FLOORING

Shubhwood range of application based low maintenance decking is suitable for every need. Elegant colours, combined with different surface finishes, results in an unmatched choice for different conditions that look great and will stay that way. High performance, low on maintenance, Shubhwood reversible deck planks are fitted to an aluminium framework with concealed fixtures, offering barefoot safe anti-skid surfaces.

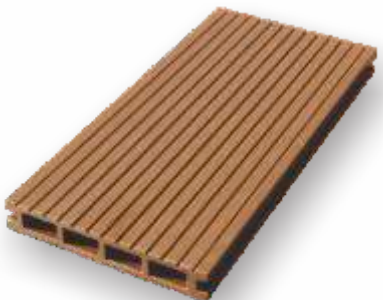


# WPC

## DECK FLOORING



- Profile Code** : SW-1001
- Dimension** : 145mm x 23mm
- Standard Length** : 2.44 mts / 8'
- Standard Color** : Wenge, Walnut
- Special Color** : Red, Black, Yellow, Beach White
- Surface Finishes** : Sanding, Brushing



- Profile Code** : SW-1002
- Dimension** : 145mm x 23mm
- Standard Length** : 2.44 mts / 8'
- Standard Color** : Wenge, Walnut
- Special Color** : Red, Black, Teak, Beach White
- Surface Finishes** : Sanding, Brushing





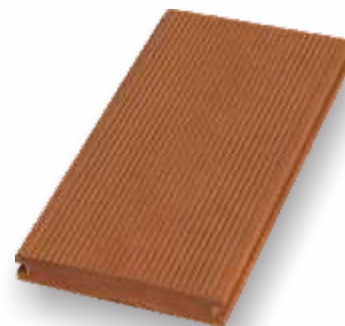
**Profile Code:** : SW-1003  
**Dimension:** : 145mm x 23mm  
**Standard Length:** : 2.44 mts / 8'  
**Standard Color:** : Wenge, Walnut  
**Special Color:** : Red, Black, Teak, Beach White  
**Surface Finishes:** : Sanding, Brushing



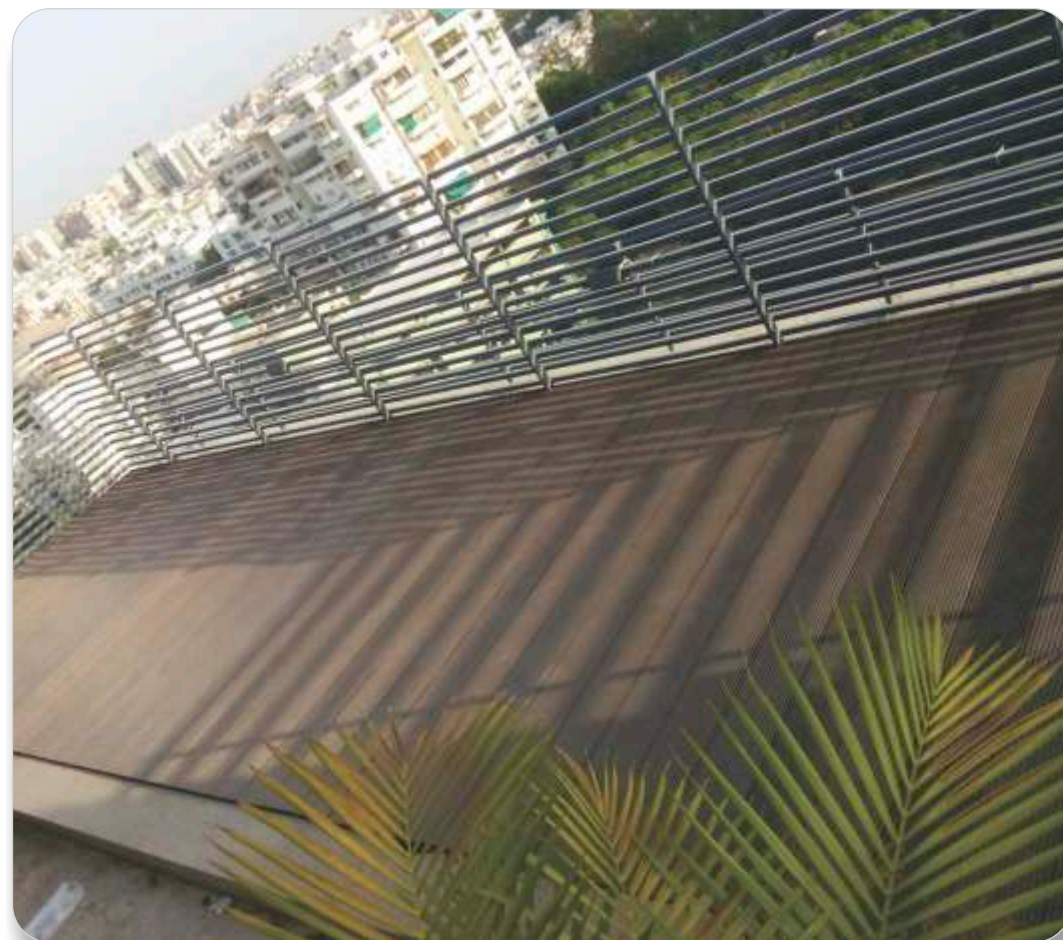
**Profile Code:** : SW-1004  
**Dimension:** : 145mm x 23mm  
**Standard Length:** : 2.44 mts / 8'  
**Standard Color:** : Wenge, Walnut  
**Special Color:** : Red, Black, Teak, Beach White  
**Surface Finishes:** : Sanding, Brushing, Wooden effect



**Profile Code:** : SW-1005  
**Dimension:** : 145mm x 23mm  
**Standard Length:** : 2.44 mts / 8'  
**Standard Color:** : Wenge, Walnut  
**Special Color:** : Red, Black, Teak, Beach White  
**Surface Finishes:** : Sanding, Brushing, Wooden Effect



**Profile Code:** : SW-1007  
**Dimension:** : 145mm x 23mm  
**Standard Length:** : 2.44 mts / 8'  
**Standard Color:** : Wenge, Walnut  
**Special Color:** : Red, Black, Teak, Beach White  
**Surface Finishes:** : Brushing





# WPC

## HYBRID DECK FLOORING

Shubhwood Co-extrusion series is the new generation of WPC. It has an advanced tough plastic shield encasing all four sides around its inner WPC core. The shield and core are extruded together under a very high temperature mold simultaneously, so there are no adhesives or chemicals that are harmful to the environment. More durable, more attractive, more fade and scratch resistant, more beautiful and more reliable.



**Profile Code** : SW-1005 (H)  
**Dimension** : 145mm x 21mm  
**Standard Length** : 2.44 mts / 8'  
**Special Color** : Teak Wood, IPE Wood, Maple Wood, Grey

### COLOR SHADE



Grey



Teak Wood



IPE Wood



Maple Wood

# WPC

## DECK TILES



Shubhwood Deck Tiles will be the quick and simple solutions if you want to transform your balconies or rooftops. Shubhwood provide a range of WPC Deck Tiles with a series of color and wood grain for selection. The installation is also very easy, as long as it's on the flat surface, simple steps can complete the outdoor floor laying, no need to use other tools.

shubhwood Deck Tiles have a non-slip deck surface that can be used as a non-slip floor next to the swimming pool. With a high strength plastic interlock frame at the bottom to facilitate air circulation and water can be discharged from the bottom.



**Profile Code** : SW-2001  
**Dimension** : 300mm x 300mm  
**Standard Thickness** : 20mm  
**Standard Color** : Wenge, Walnut  
**Special Color** : Red, Black, Teak, Beach White  
**Surface Finishes** : Brushing



**Profile Code** : SW-2002  
**Dimension** : 300mm x 300mm  
**Standard Thickness** : 20mm  
**Standard Color** : Wenge, Walnut  
**Special Color** : Red, Black, Teak, Beach White  
**Surface Finishes** : Brushing





# WPC

## DECK TILES



**Profile Code** : SW-2003  
**Dimension** : 300mm x 300mm  
**Standard Thickness** : 20mm  
**Standard Color** : Wenge, Walnut  
**Special Color** : Red, Black, Teak, Beach White  
**Surface Finishes** : Brushing



**Profile Code** : SW-2004  
**Dimension** : 300mm x 300mm  
**Standard Thickness** : 20mm  
**Standard Color** : Wenge, Walnut  
**Special Color** : Red, Black, Teak, Beach White  
**Surface Finishes** : Brushing

# WPC

## DECK TILES



**Profile Code** : SW-2005  
**Dimension** : 300mm x 300mm  
**Standard Thickness** : 20mm  
**Standard Color** : Wenge, Walnut  
**Special Color** : Red, Black, Teak, Beach White  
**Surface Finishes** : Brushing









# WPC

## WALL CLADDING

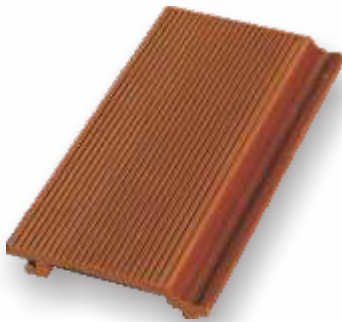
Shubhwood cladding boards lend a distinct impression on facades. Highly resistant to fading or dis-colouration, buildings will look new for years, without the hassles of periodic maintenance. Interlocking assembly ensures no water leaks to the building superstructure and hollow core technology for insulation are benefits unavailable in other facade solutions.

Shubhwood cladding blends perfectly with other materials in contemporary or futuristic design, unboxing a whole new world of possibilities.



# WPC

## WALL CLADDING



- Profile Code** : SW-3001
- Dimension** : 125mm x 20mm
- Standard Length** : 2.4 mtr / 8'
- Standard Color** : Wenge, Walnut
- Special Color** : Red, Black, Teak, Beach White
- Surface Finishes** : Brushing



- Profile Code** : SW-3002
- Dimension** : 125mm x 20mm
- Standard Length** : 2.4 mtr / 8'
- Standard Color** : Wenge, Walnut
- Special Color** : Red, Black, Teak, Beach White
- Surface Finishes** : Sanding, Brushing, Wooden Effect



# WPC

## HYBRID WALL CLADDING

Shubhwood Co-extrusion series is the new generation of WPC. It has an advanced tough plastic shield encasing all four sides around its inner WPC core. The shield and core are extruded together under a very high temperature mold simultaneously, so there are no adhesives or chemicals that are harmful to the environment. More durable, more attractive, more fade and scratch resistant, more beautiful and more reliable.



**Profile Code** : SW-3004 (H)  
**Dimension** : 150mm x 18mm  
**Standard Length** : 2.4 mtr / 8'  
**Standard Color** : Teak Wood, IPE Wood, Grey, Maple Wood

### COLOR SHADE



# WPC

## PERGOLA & GAZEBO



Shubhwood hollow profiles are the perfect material for pergolas, gazebos and elevation features. Our light weight sections replace heavy steel frames or wood which demand periodic maintenance and painting to avoid deterioration from exposure to weather or corrosion. With a wood appearance that requires little maintenance, Shubhwood profiles retain natural wood aesthetics in terrace and garden pergolas, cantilever features, car parks, elevation features of buildings and other applications.

### APPLICATION

- Beach Areas
- Hotel Buildings
- Hotel Gardens
- Roof Gardens
- Theme Parks
- Villa Complex
- Parking Areas



**Profile Code** : SW-4001  
**Dimension** : 150mm x 150mm  
**Standard Length** : 2.4 mtr / 8'  
**Standard Color** : Wenge, Walnut  
**Surface Finishes** : Brushing



**Profile Code** : SW-4002  
**Dimension** : 160mm x 80mm  
**Standard Length** : 2.4 mtr / 8'  
**Standard Color** : Wenge, Walnut  
**Surface Finishes** : Brushing



**Profile Code** : SW-4006  
**Dimension** : 100mm x 60mm  
**Standard Length** : 2.4 mtr / 8'  
**Standard Color** : Wenge, Walnut  
**Surface Finishes** : Brushing















# WPC RAILLING

ShubhWood Railing helps in protecting the garden areas from animals and gives flexibility to personalize the living space. We are marked as prestigious Manufacturers, Suppliers and Exporters of WPC Fencings. Shubhwood Railing is manufactured using high quality material and advance technology. The WPC Railing that we offer is weather-resistant, durable and has longer service life.



Design 1



Design 2



**Profile Code** : SW-4003  
**Dimension** : 95mm x 95mm  
**Standard Length** : 2.4 mtr / 8'  
**Standard Color** : Wenge, Walnut  
**Surface Finishes** : Brushing



**Profile Code** : SW-4004  
**Dimension** : 45mm x 65mm  
**Standard Length** : 2.4 mtr / 8'  
**Standard Color** : Wenge, Walnut  
**Surface Finishes** : Sanding, Brushing

# WPC RAILLING



**Profile Code** : SW-4005  
**Dimension** : 25mm x 25mm  
**Standard Length** : 2.4 mtr / 8'  
**Standard Color** : Wenge, Walnut  
**Surface Finishes** : Brushing



**Profile Code** : SW-4008  
**Dimension** : 45mm x 65mm  
**Standard Length** : 2.4 mtr / 8'  
**Standard Color** : Wenge, Walnut  
**Surface Finishes** : Sanding, Brushing



**Profile Code:** : SW-5001  
**Dimension:** : 68mm x 9mm  
**Standard Length:** : 2.4 mtr / 8'  
**Standard Color:** : Wenge, Walnut  
**Special Color:** : Red, Black, Teak, Beach White  
**Surface Finishes:** : Sanding, Brushing, Wooden Effect



# WPC

## HYBRID LOUVER

Shubhwood Co-extrusion series is the new generation of WPC. It has an advanced tough plastic shield encasing all four sides around its inner WPC core. The shield and core are extruded together under a very high temperature mold simultaneously, so there are no adhesives or chemicals that are harmful to the environment. More durable, more attractive, more fade and scratch resistant, more beautiful and more reliable.



- Profile Code** : SW-4009 (H)
- Dimension** : 100mm x 40mm
- Standard Length** : 2.4 mtr / 8'
- Standard Color** : Teak Wood, IPE Wood, Grey, Maple Wood

### COLOR SHADE



# WPC

## BENCHES





# WPC

## HYBRID PLANK

Shubhwood Co-extrusion series is the new generation of WPC. It has an advanced tough plastic shield encasing all four sides around its inner WPC core. The shield and core are extruded together under a very high temperature mold simultaneously, so there are no adhesives or chemicals that are harmful to the environment. More durable, more attractive, more fade and scratch resistant, more beautiful and more reliable.



**Profile Code** : SW-1006 (H)  
**Dimension** : 150mm x 16mm  
**Standard Length** : 2.4 mtr / 8'  
**Standard Color** : Teak Wood, IPE Wood, Grey, Maple Wood

### COLOR SHADE



Grey



Teak Wood



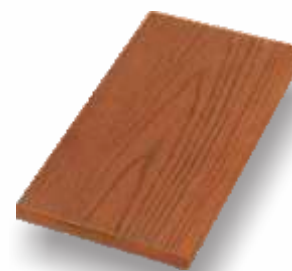
IPE Wood



Maple Wood

# WPC

## EXTERIOR GATE



**Profile Code** : SW-1006  
**Dimension** : 150mm x 14mm  
**Standard Length** : 2.4 mtr / 8'  
**Standard Color** : Wenge, Walnut  
**Special Color** : Red, Black, Teak, Beach White  
**Surface Finishes** : Sanding, Wooden Effect



**Profile Code:** : SW-4007 (S)  
**Dimension:** : 100mm x 20mm  
**Standard Length:** : 2.4 mtr / 8'  
**Standard Color:** : Wenge, Walnut  
**Special Color:** : Red, Black, Teak, Beach White  
**Surface Finishes:** : Sanding, Wooden Effect







Zulla



Sunscreen



Jacuzzi



Flowerpot

COLOR CHART

STANDARD COLOR



Wenge



Walnut

SPECIAL COLOR



Red



Black



Teak



Beach White

\*Note: 5% to 7% color variation is common in this product, because of waste wood.

SURFACES



Wooden Effect 1



Wooden Effect 2



Brushing

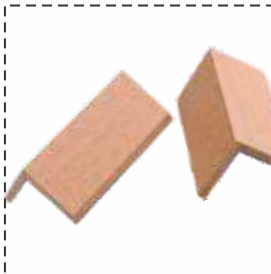


Sanding

ACCESSORIES



Flooring Joist



L Shape End Cap



Clamp



PVC Clamp



# WPC

## TEST PARAMETERS

Sr.	Test parameters	Test methods	Unit	Test result
1	Moisture content	-----	%	2.5
2	Water absorption	ASTM D 570	%	0.6
3	Co-efficient of friction	ASTM D 1894	---	0.58
4	Taber abrasion (H-18 wheels , 1000gm load, 1000 cycle)	ISO 9352	%	0.1
5	Impact Resistance	ASTM D 256	J/M	26.5
6	Bending strength	ASTM D 790	Kg/cm <sup>2</sup>	276.4
7	Vicat softening temp. at 10N	ASTM D 1525	°C	123
8	Heat Deflection Temp. at 1.8 MPa	ASTM D 648	°C	64
9	Visual Appearance after UV exposure	IS 14887: 2000	---	No color change observed

## CERTIFICATE



ISO 9001:2008



ISO 14001:2004



Material Test report



Trust Seal



Green Pro

## EXHIBITION



ACETECH AHMEDABAD - 2015



ACETECH MUMBAI - 2015

ACETECH BANGLORE - 2016



ACETECH AHMEDABAD - 2017

ACETECH MUMBAI - 2017



ACETECH MUMBAI - 2016



A & I EXHIBITION, PUNE



Izmir International Fair - 2018  
Expo Cihac - 2018